



- EU Ministers of transport promote waterway transport
- Successor Marco Polo ready to start in 2007
- All you want to know about the planned link Seine-Scheldt
- More freight on small waterways
- Germany amends law to strengthen inland navigation
- River Information Services in Hungary forges ahead pdf

EU Ministers of transport promote waterway transport



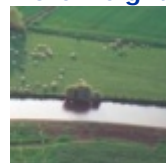
At the transport council of 8-9 June, the ministers of transport of the EU countries gave their full support to the action plan NAIADES of the European Commission. This plan aims to promote a better use of inland waterway transport. The ministers invite the Commission to take the appropriate measures to implement the programme, call upon all involved countries to promote inland shipping at national level and ask the industry to actively contribute. [More...](#)

Successor Marco Polo ready to start in 2007



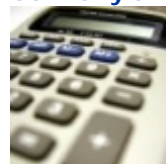
The Council of ministers and the European Parliament agreed on how the second Marco Polo programme will look like. The EU aid programme provides grants to a selection of projects avoiding traffic or shifting cargo from road to rail, inland and short sea shipping in accordance with the EU transport policy to balance the transport system. The new programme will run from 2007 to 2013. On 29-30 June 2006 the European Commission organises a conference in Budapest to inform all interested parties on the Marco Polo programme. [More...](#)

More freight on small waterways



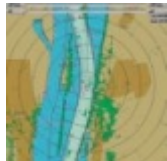
A couple of years ago, a Belgian study showed that existing freight transport on small waterways generates sufficient societal benefits to completely cover the costs of maintenance and operation of the infrastructure. Today, the Belgian and Dutch project partners of the project "Waterslag" gathered forces to turn a better use of small rivers and canals into practice by developing a new push barge. They will hold a press conference on 30 June in Mechelen, Belgium to report on their first results. [More...](#)

Germany amends law to strengthen inland navigation



Last month, the German Government amended the Federal Law for Fiscal Advancement of Growth and Employment in favour of inland shipping companies. Amongst others, the reform package regulates the tax-free plough-back of booked profits gained by the sale of vessels into the purchase of new vessels. This change in law found its inspiration in the Dutch fiscal regime, and entered into force with retroactive effect, starting from 1 January 2006. [More...](#)

River Information Services in Hungary forge ahead



River Information Services (RIS) enhance digital information exchange between waterway authorities and users. Hungary does not miss the boat and implements all service requirements to run RIS. Notices to Skippers are implemented, the first electronic charts are made available over a distance of 270 km, dangerous goods transports can now be electronically reported to the authorities, tracking and tracing is made possible by the AIS infrastructure ashore and the calamity centre offers information services for the navigation industry 24/7. By 2009, RIS will cover most interlinked EU waterways for freight. [More..](#)

All you want to know about the planned link Seine-Scheldt



The new Seine Scheldt link will connect Paris, Le Havre and Rouen to the Benelux and western Europe over water. A new website informs about this trans-European priority project covering infrastructure works in Belgium and France, including waterway upgrades and bridge elevations to allow the passage of 4,400 tonne vessels and 3-layer container transport. The first works have already started on the river Lys. The centrepiece of the project will be the new canal Seine Nord Europe, to be finalised by 2012. [More...](#)

INE ■ Inland Navigation Europe
Koning Albert II-laan 20 ■ office 6G65 ■ B-1000 Brussels
info@inlandnavigation.org ■ www.inlandnavigation.org